



DS-4304HDI-E
Audio/Video Decoding Card
User Manual

Version 6.3
2012-07-31

Model
DS-4304HDI-E

Notices

The information in this documentation is subject to change without notice and does not represent any commitment on behalf of HIKVISION. HIKVISION disclaims any liability whatsoever for incorrect data that may appear in this documentation. The product(s) described in this documentation are furnished subject to a license and may only be used in accordance with the terms and conditions of such license.

Copyright © 2006-2012 by HIKVISION. All rights reserved.

This documentation is issued in strict confidence and is to be used only for the purposes for which it is supplied. It may not be reproduced in whole or in part, in any form, or by any means or be used for any other purpose without prior written consent of HIKVISION and then only on the condition that this notice is included in any such reproduction. No information as to the contents or subject matter of this documentation, or any part thereof, or arising directly or indirectly therefrom, shall be given orally or in writing or shall be communicated in any manner whatsoever to any third party being an individual, firm, or company or any employee thereof without the prior written consent of HIKVISION. Use of this product is subject to acceptance of the HIKVISION agreement required to use this product. HIKVISION reserves the right to make changes to its products as circumstances may warrant, without notice.

This documentation is provided “as-is,” without warranty of any kind.

Please send any comments regarding the documentation to:
overseasbusiness@hikvision.com

Find out more about HIKVISION at www.hikvision.com

Contents

Notices	ii
Chapter 1 Product Description	1
1.1. Product Description	1
1.2. Technical Specification	2
1.3. Product Features	3
Chapter 2 Product Performance	4
Chapter 3 Compatible Software/ Hardware Configuration	5
3.1. Operating System	5
3.2. CPU and Motherboard.....	7
3.3. System Memory	7
3.4. Display Adapter.....	8
3.5. Power Supply.....	8
Chapter 4 Driver Installation	9
Chapter 5 Cable Connection & Pin Definition	11
5.1. DS-4304HDI-E Accessories and Connection	11

Chapter 1 Product Description

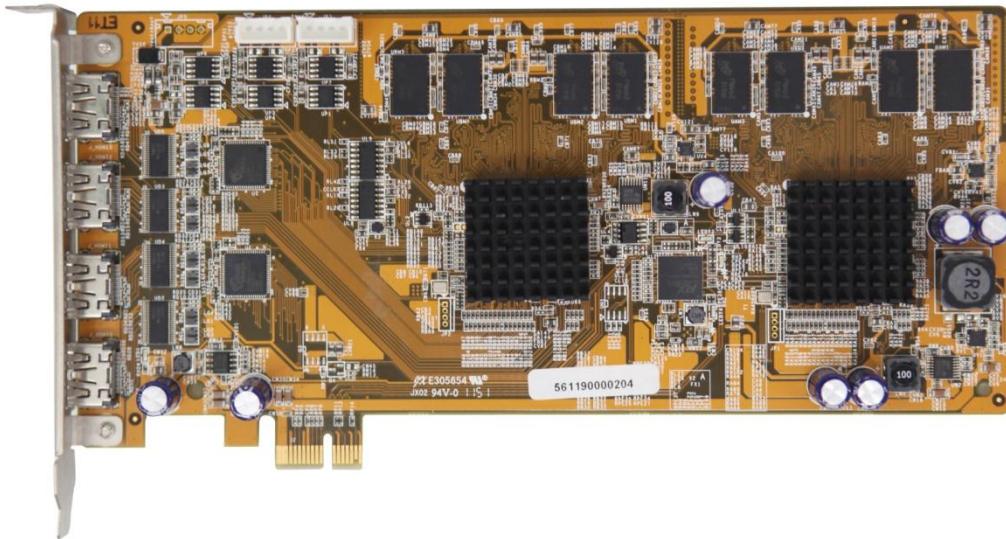
1.1. Product Description

HIKVISION DS-4304HDI-E decoding card supports up to 5.0 Megapixel video decoding under various stream packet formats and encoding standards, and outputs decoded video/audio data through universal HDMI interfaces, while separate BNC audio output interfaces are provided at the same time. The card can be plugged onto a PC motherboard and construct a PC-based decoding system together with management software, and meets different requirements of surveillance applications consequently.

Order Model

DS-4304HDI-E

Product Snapshot



1.2. Technical Specification

Model	DS-4304HDI-E
Supported Video Encoding	MPEG-4, H.264
Video Decoding Resolution	2-ch 5.0 Megapixel (2560 x 1920) 4-ch 1080P 8-ch 720P 16-ch 4CIF
Video Output Interface	4 HDMI video & audio composite output
Video Output Resolution	1920 x 1080 / 60Hz (1080P @ 60) 1920 x 1080 / 50Hz (1080P @ 50) 1280 x 720 / 50Hz (720P @ 50) 1280 x 720 / 60Hz (720P @ 60) 1280 x 960 / 60Hz 1024 x 768 / 60Hz
Supported Audio Encoding Standard	OggVorbis, G-711, MPEG1 Layer 2
Audio Output	4 BNC (2.0 Vp-p, 1k Ω , volume adjusting range: 83dB), mono (or output via HDMI composite outputs)
PCI Standard	PCI-E x 1 2.0
Dimensions (mm)	213 x 93
Power Consumption	< 13.5 w

1.3. Product Features

- PCI Express interface
- Up to 4 DS-4304HDI-E card per PC
- Up to 5.0 Megapixel decoding
- Multiple input stream packet format
- Multiple input video standards
- Multiple input audio standards
- Various output resolution
- Up to 16 screen-split display for each HDMI output
- Query of supported resolution via SDK API
- Low power consumption and high stability

Chapter 2 Product Performance

- **DS-4304HDI-E**
2-ch 5.0 Megapixel (2560 x 1920) decoding, or
4-ch 1080P decoding, or
8-ch 720P decoding, or
16-ch 4CIF decoding

HDMI output, up to 4 x 4 screen-split with configurable output resolution of:

1920 x 1080 / 60Hz (1080P @ 60)
1920 x 1080 / 50Hz (1080P @ 50)
1280 x 720 / 50Hz (720P @ 50)
1280 x 720 / 60Hz (720P @ 60)
1280 x 960 / 60Hz
1024 x 768 / 60Hz

Notice

1. All the performance testing is done under normal office scene with color camera input, and the recording performance may differ according to the surveillance scene.
2. Please kindly refer to <http://www.hikvision.com> or contact HIKVISION technical support for the latest updates of card performance.
3. Performance may be slightly different according to the card number and PC HD read/write efficiency.

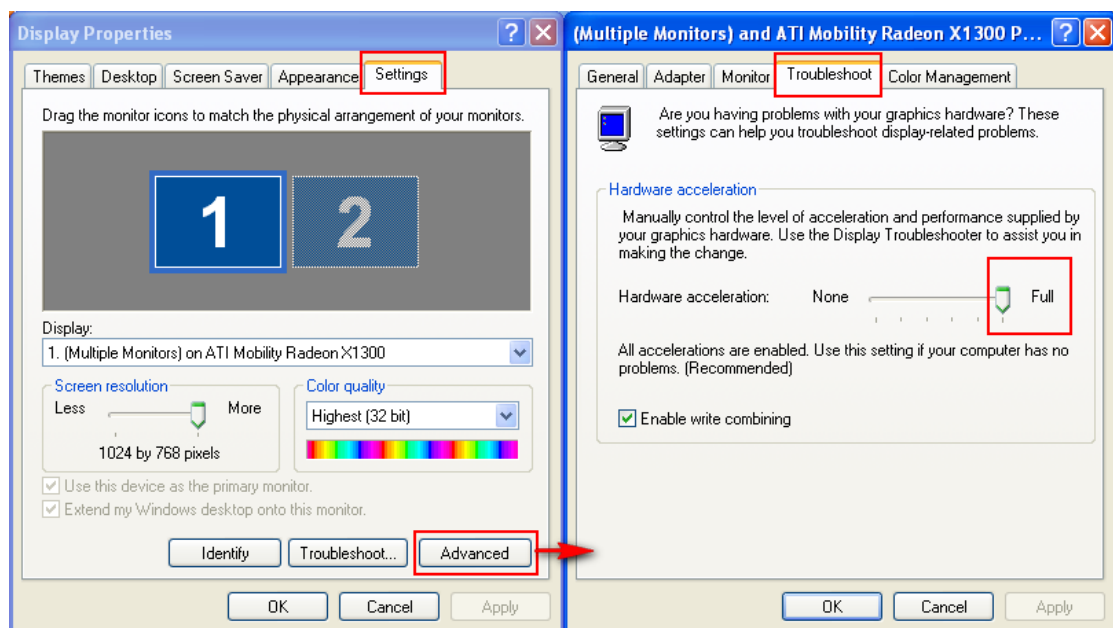
Chapter 3 Compatible Software/ Hardware Configuration

3.1. Operating System

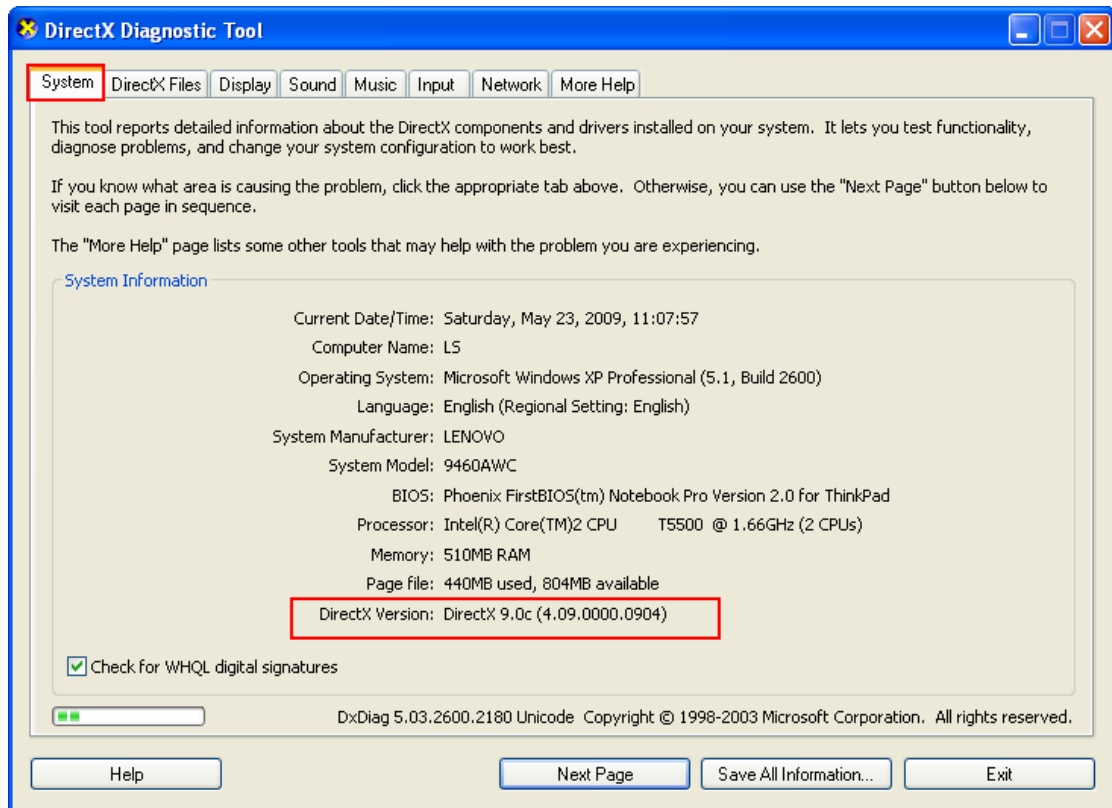
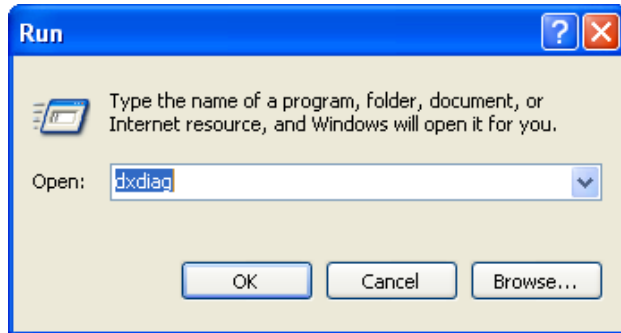
It is suggested to use Windows 2000 Pro + SP4, Windows XP + SP2, Windows Vista, Windows 7 or Windows Server 2008 Operating System installed with DirectX version 8.1 or higher version. Card driver and SDK compatible with Linux OS will be released very soon.

For Windows 2003 OS, please kindly follow the operation steps below.

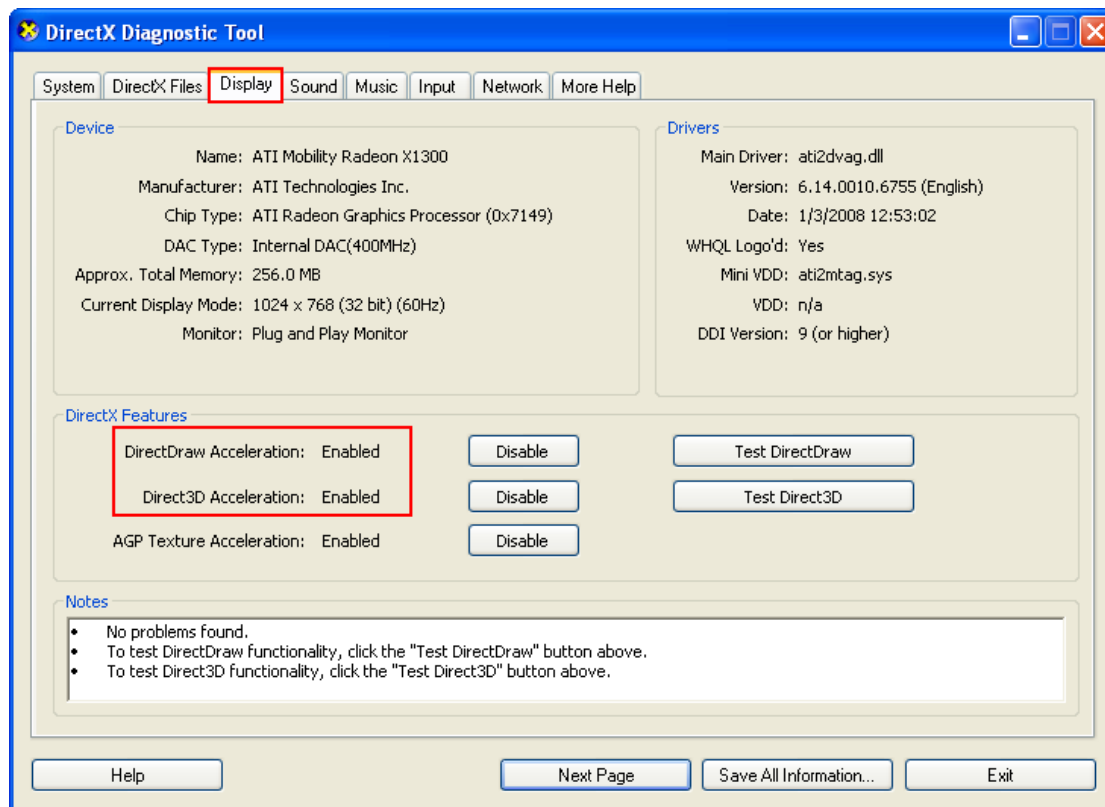
1. Right click on Windows Desktop-> Select "Properties" ->Settings-> Advanced-> Troubleshoot->and drag "Hardware Acceleration" to "Full".



2. Click "Start"-> "Run" of Windows task bar, input "dxdiag" and enter DirectX diagnosing program. Please check if DirectX version is above 8.1. If yes, please kindly refer to step 3; if not, please upgrade it to version higher than 8.1 first.



3. Enable "DirectDraw" and "Direct3D" options in the "Display" column.



3.2. CPU and Motherboard

It is suggested to use motherboard with Intel Core2, Core4, i3, i5 or i7 CPU.

And it is suggested to use motherboard from reliable manufactures such as Intel, Asus, Gigabyte, Microstar, etc.

Tested motherboard models compatible with DS-43xx series card are listed as following.

ASUS P8H61
 ASUS P8P67 LE
 ECS H67H2-M
 ASUS P8H61 PLUS
 Etc.

Note:

Please refer to HIKVISION website (<http://www.hikvision.com>) for up-to-date hardware compatibility information under 'Support > FAQ'

3.3. System Memory

≥1G

Note:

Larger memory size is required when the card number installed in the PC increases.

3.4. Display Adapter

To support high resolution live view/ record function of the card, it is suggested to use a high performance display adapter. Please kindly refer to the list below for tested models of compatible display adapters. Please notice that the driver of these display adapters must support BLT function.

Nvidia GeForce GTX 560

AMD Radeon HD 6700 / Radon HD 6900

ATI Radeon HD 4800 / Radeon X1600 Pro / Radeon HD3450

Nvidia GeForce GTS 250 / GeForce GTS 450

GeForce 8600GT

Sapphire HD6950

Yeston R2400PRO-HM256GD3

3.5. Power Supply

≥400W

Chapter 4 Driver Installation

To install the card to your PC, please kindly follow these steps below:

1. Insert the card into an empty PCI-E slot.
2. Turn on the PC and start Windows.
3. Windows Hardware Wizard detects the card and is populated automatically. Please ignore the wizard window.
4. Locate to the folder of DS-43xx Driver, and run "Driver Install.exe". The Driver Install dialog box will be displayed on screen.



5. Click "Install or Update Driver" to install/update the driver, and a Windows dialog box will be displayed on screen.

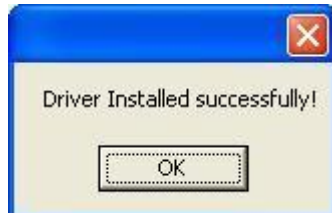


6. Click "Continue Anyway" to continue the hardware installation.

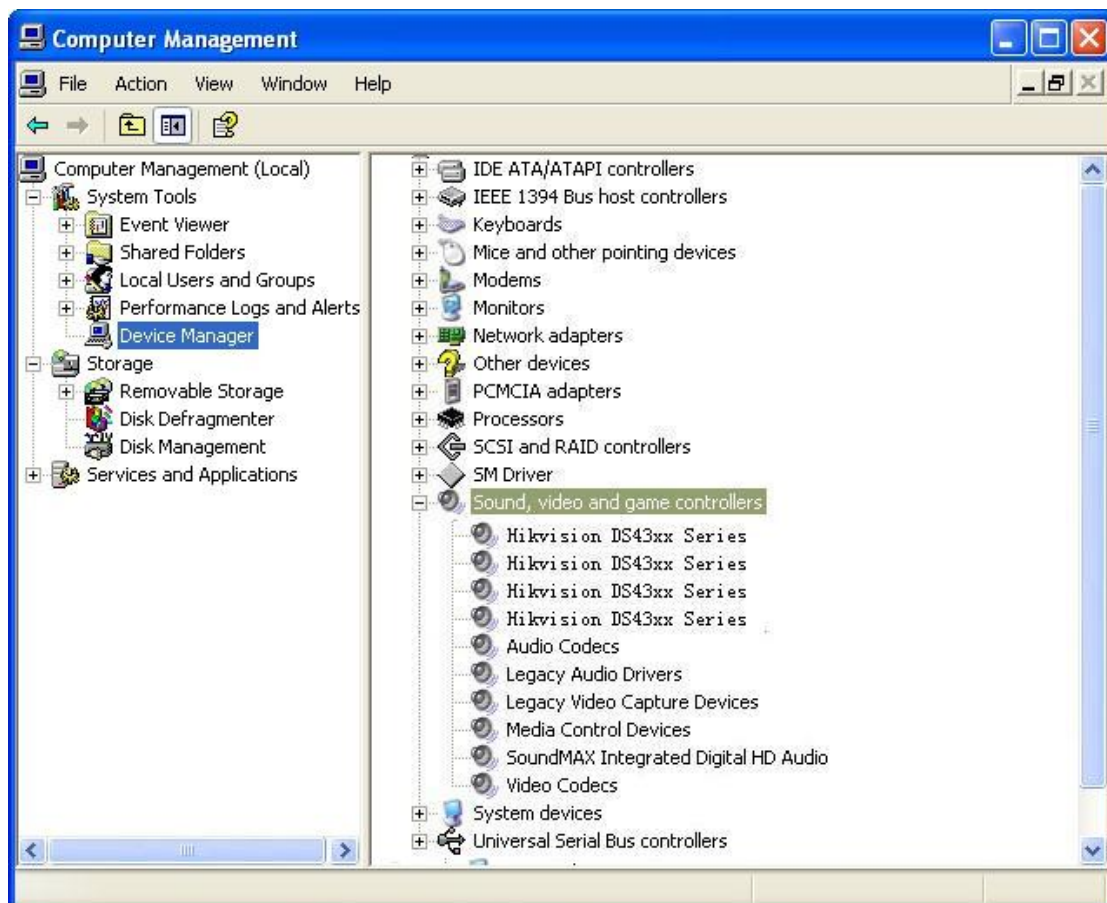
Note:

If there is more than 1 card installed in the PC or more than 1 DSP in one card, users may need to repeat step 5 & Step 6.

7. When the installation is done, this message will appear: Driver Installed Successfully!



8. After "Driver install success" message popup during driver installation, there will be "Hikvision DS43xx Series" displayed in the list "Sound, Video and Game Controller" of Windows Device Manager as below. The total number of this item is equal to the total DSP number on the cards installed inside the PC.



Chapter 5 Cable Connection & Pin Definition

Definition

5.1. DS-4304HDI-E Accessories and Connection

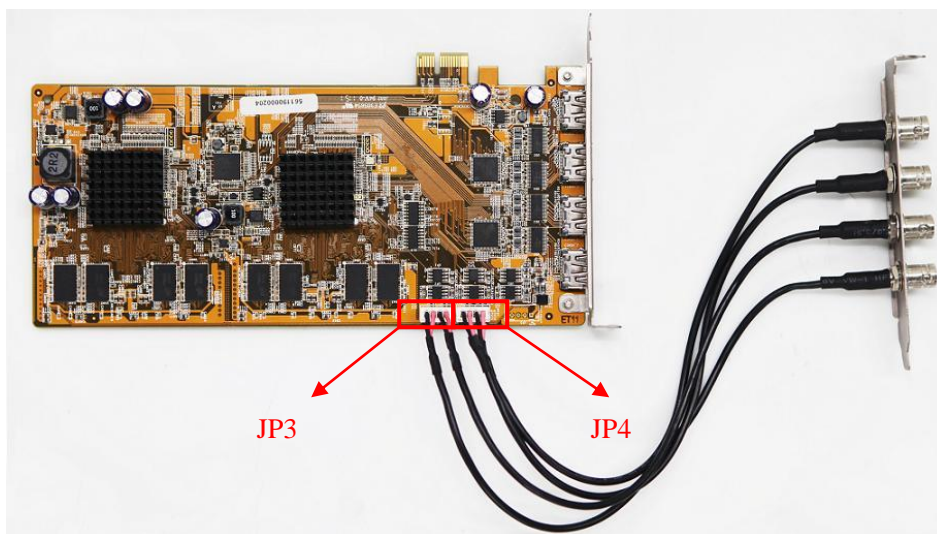
Each DS-4304HDI-E card is with 4 HDMI video& audio composite output and 4 additional BNC audio output that can be separately connected from the JP3 & JP4 on-board connector via an adaptor cable.



HDMI Output Interfaces



Adaptor for Audio Input



Connection of Audio Adaptor