

## 2nd Gen Indoor Station

### V2.1.10\_build200713 Release Note

#### (2020-07-27)

Device Model	DS-KH8350-WTE1, DS-KH8350-TE1, DS-KH6320-WTE1, DS-KH6320-WTE2, DS-KH6320-WTE2(B), DS-KH6320-TE1, DS-KH8520-WTE1
Firmware Version	Indoor Station: v2.1.10_build200713
iVMS-4200 Version	V3.3.1.4 build 20200806
Hik-Connect APP	4.6.2.0724

#### **New Function**

##### 1. Higher security, SIP Passwords (Register Passwords)

SIP password is actually Register Password, which is suitable for our security 2.0 protocol. They can communicate normally only when the **SIP passwords (Register passwords)** of the door station, indoor station and indoor extension are the **same**.

Wizard-Settings 3/4

Indoor Station Type Indoor Station >

Floor	1
Room No.	1
SIP Password	Not Configured. >
Advanced Settings	>

Indoor Extension Settings

Previous Next Skip

Wizard-Settings 3/4

Indoor Station Type Indoor Station >

Floor	1
Room No.	1
SIP Password	Not Configured. >
Advanced Settings	>

Indoor Extension Settings

Previous Next Skip

SIP register password

Enter SIP register password

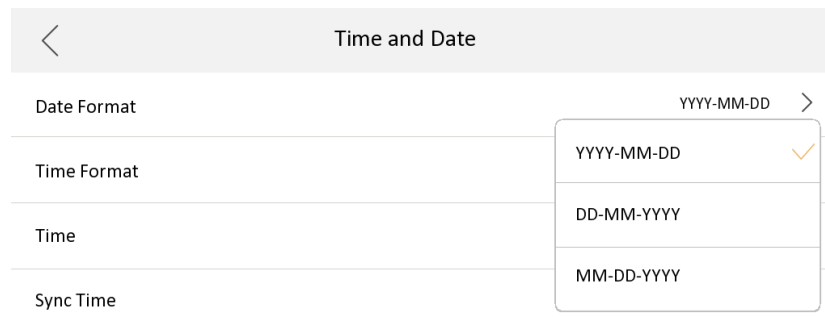
SIP register password again

Cancel OK

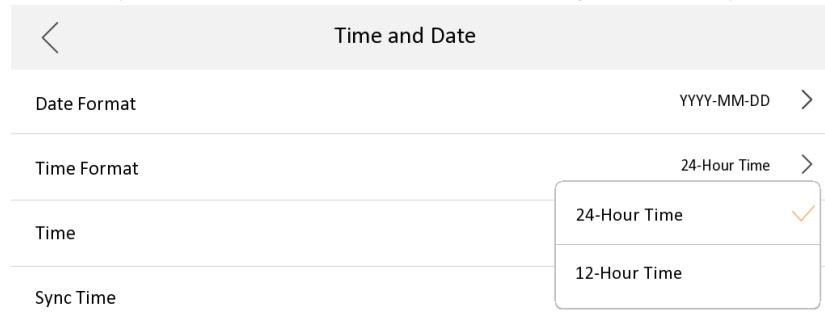
##### 2. Support three date formats, two clock format configuration (Time format only allows local

modification)

1) Support three formats in Settings->General Settings->Time and Date interface, set year-month-day, day-month-year, month- day - year

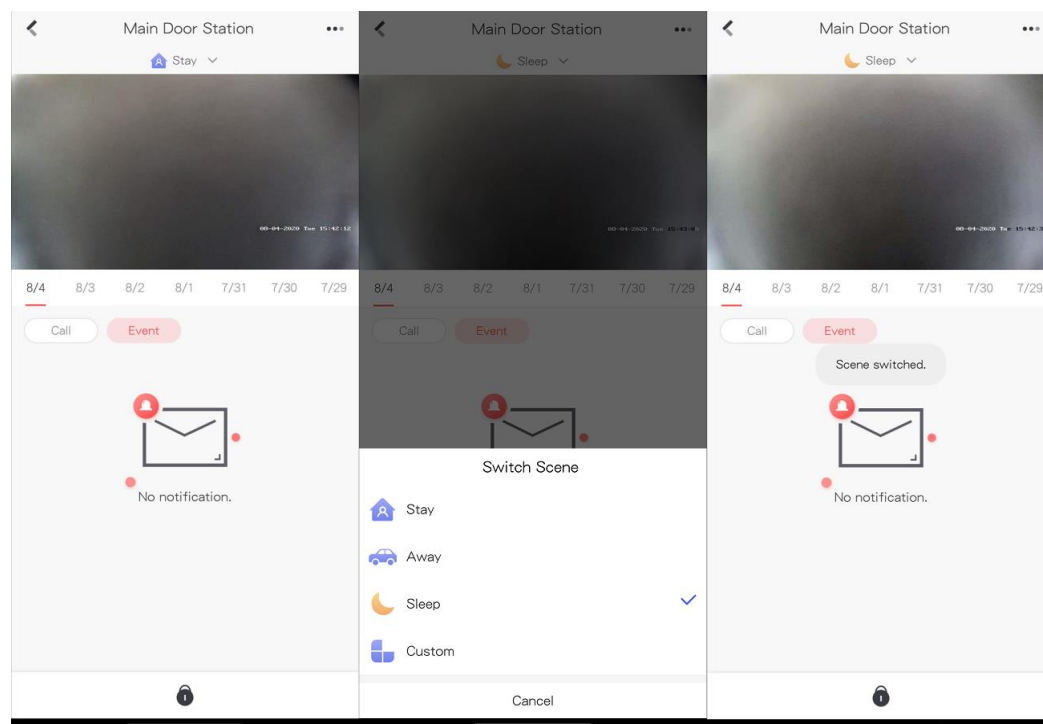


2) Support the Settings->General Settings->Time and Date interface, set the 12-hour system, 24-hour system two formats, and the default setting is 24-hour system display.



3. Multi-language added to 12 countries: English, French, Portuguese (Brazil), Spanish, Russian, German, Italian, Polish, Arabic, Turkish, Vietnamese, Ukrainian.

4. The indoor station supports remote scene switching through Hik-Connect, including four modes: Stay, Away, Sleeping and Custom.

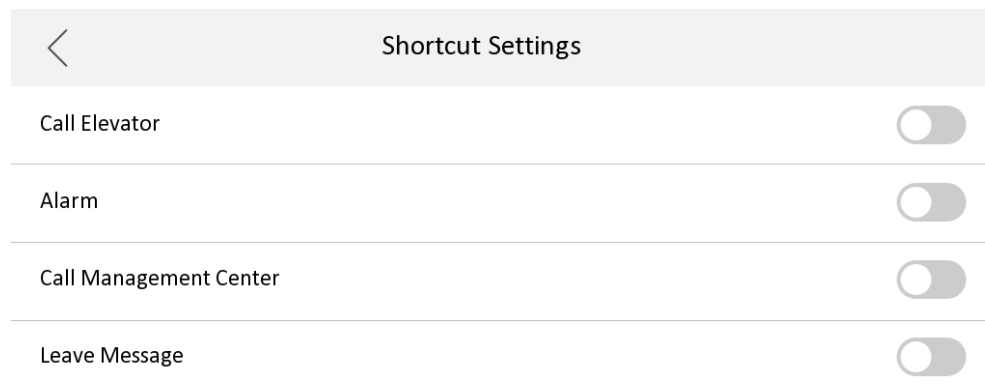


When the indoor station is not currently configured with the arm/disarm password, the Hik-Connect switching scene will fail, and indoor station will send an error code to Hik-Connect App

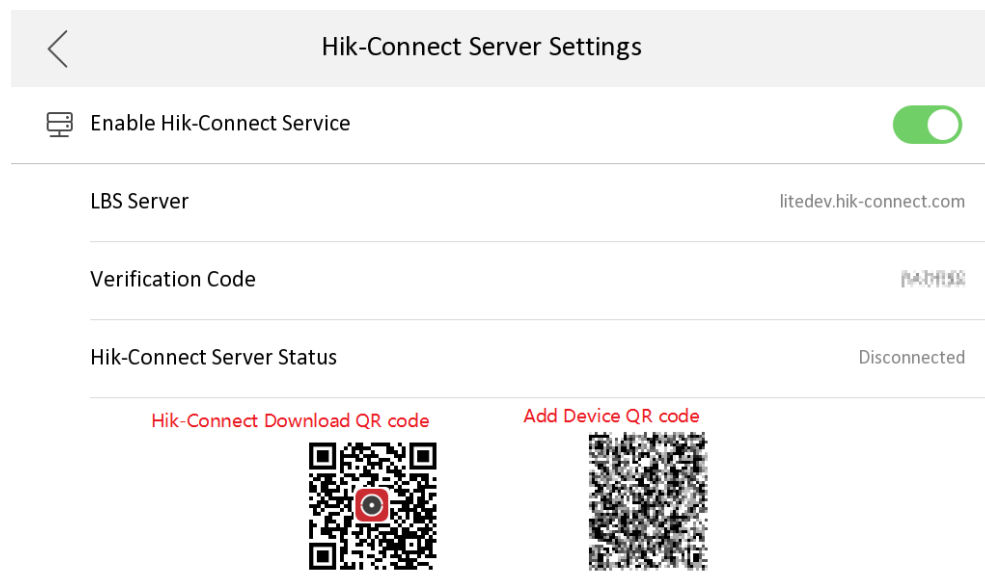
5. Support whether to enable the call management center function, it is disabled by default

6. Support whether to enable the leave message function, it is disabled by default

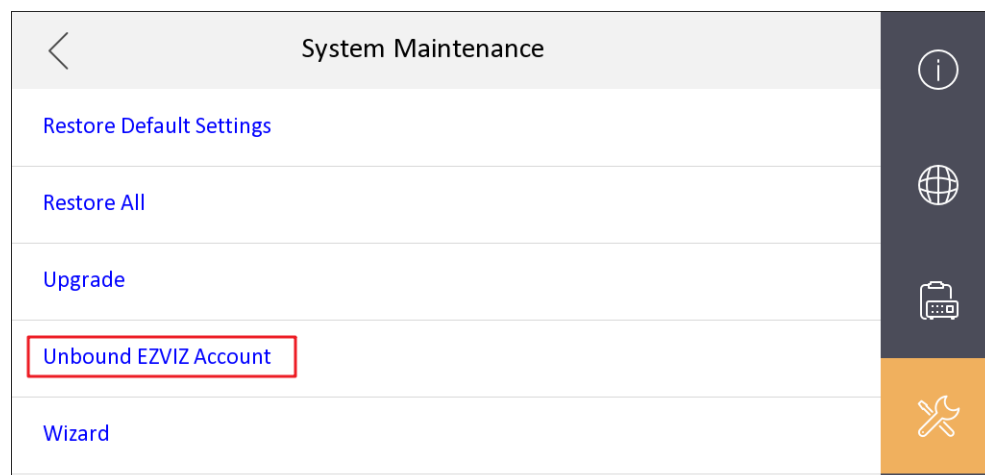
1) In the Settings->More->Preference->Shortcut Settings interface



7. Add the QR code of Hik-Connect App download address to the indoor station Hik-Connect configuration interface



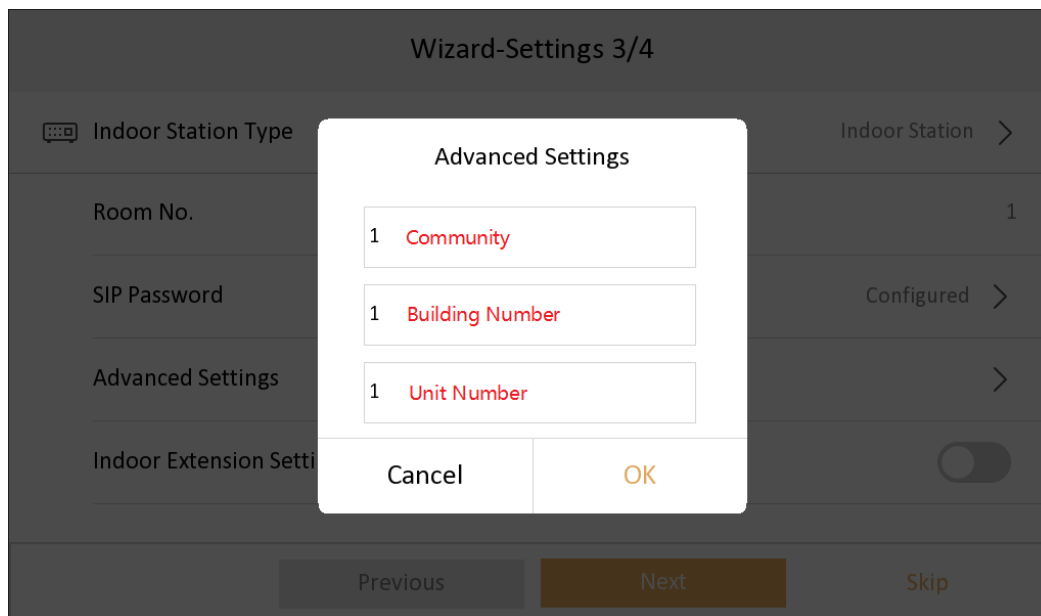
Indoor Station local UI, SADP tool, Hik-connect support fluorite account unbinding



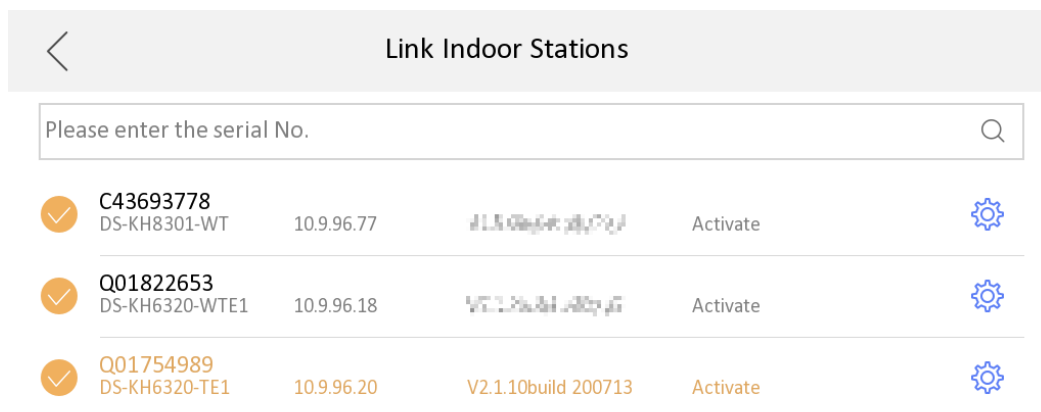
## Hikvision Video Intercom v2.0 Protocol

The communication protocol between Hikvision devices uses a secure private call protocol, and the communication with 3<sup>rd</sup> party devices uses standard SIP;

1) Support setting community number, building number, unit number, and room number on the indoor station;



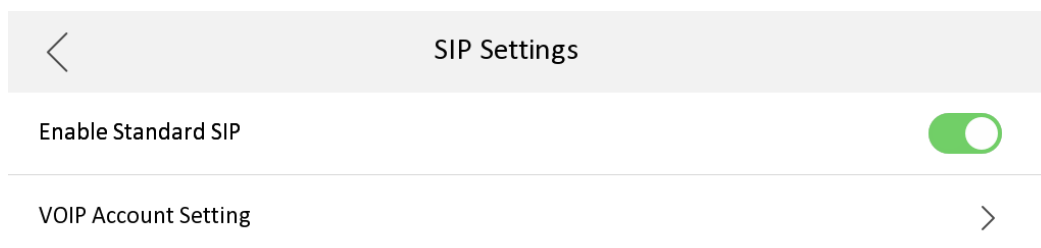
2) Support remote configuration of indoor extension information through the main indoor station;



3) Standard SIP and private SIP integration:

a) The indoor station does not need to switch the SIP mode;

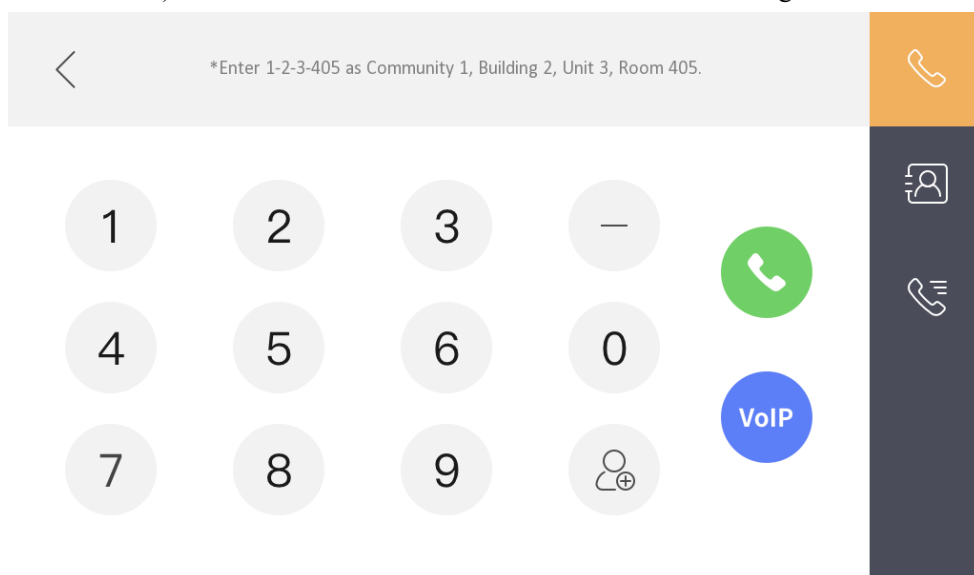
b) The standard SIP of the indoor station is disabled by default, if you want to connect to a third-party standard SIP device, you need to turn on this function.



c) A standard SIP registration status icon is added to the main interface, which can be displayed/hidden according to whether standard SIP is enabled;



d) Added a VoIP call button in the call interface to distinguish standard SIP calls



4) Supports two audio formats, G.711U and G.711A. (And G.711U priority is greater than G.711A)

### **NOTE:**

1. At present, the indoor station can support customization requirements of more than 5 extensions;
2. The description of ONVIF in the local UI of the indoor station is uniformly changed to open network video interface.
3. The main indoor station and indoor extension must use the same firmware version. And starting from this firmware version, the 1<sup>st</sup> generation video intercom indoor station will not be compatible as a main indoor station or indoor extension to connect this 2<sup>nd</sup> generation firmware version system.